

CRITICAL SERVICE BULLETIN

CSB93-13

Compliance Necessary To Maintain Safety

FAA APPROVED

SUBJECT: CARBURETOR AIR INTAKE HOUSING ASSEMBLY INSPECTION

PURPOSE: To provide an inspection procedure and replacement instructions for carburetor air intake housing assemblies.

COMPLIANCE: Those carburetor air intake housing assemblies, repair kits and engines listed in the MODELS AFFECTED must be inspected within the next 10 hours and every 25 hours thereafter until replaced with a current production assembly.

MODELS AFFECTED:


1) C85, C90, O200A & B, and O240 model engines Carburetor Air Intake Housing Assemblies and P/N 641689 Repair Kit Assemblies that were purchased from TCM between the dates of September 1, 1991, and June 30, 1993. The Carburetor Air Intake Housing Assembly part numbers which are affected are: CE11141, CE11142, 639814, 639815 and 641534 as identified in paragraph 2B of the Inspections Procedures set forth in this bulletin.

2) All new engines identified below.

The engines listed below must be inspected to determine if the affected assemblies are installed. Those that have affected assemblies installed must be inspected per the Inspection Procedures set forth in this bulletin.

MODEL	SERIAL NUMBER
NEW ENGINES	
O200A	256030 thru 256037

TCM has received reports that the affected carburetor air intake housing assemblies have experienced cracks in the air valve and in the welds which attach the air valve to the shaft. Therefore, it is necessary to inspect and replace the affected assemblies in accordance with the following instructions. Affected repair kits P/N 641689 must be replaced with current production kits.

ISSUED			REVISED			 TELEDYNE CONTINENTAL MOTORS P.O. Box 90 • MOBILE ALABAMA 36601 (205)-438-3411	PAGE NO	REVISION
MO	DAY	YEAR	MO	DAY	YEAR		1 of 3	NONE
08	12	93						

WARNING . . . Failure to replace any affected assembly that contains a crack may result in breakage of the air valve and/or separation of the air valve from its shaft and cause partial or total loss of engine power.

INSPECTION PROCEDURE

1. Remove engine cowling to gain access to the carburetor air intake housing assembly.
2. Measure the exposed portion of the Teflon bearing. See Figure 1.
 - A. Those carburetor air intake housing assemblies having an exposed portion of the Teflon bearing which measures .062 (as shown in Figure 1 A) do not require replacement pursuant to this bulletin. However, such assemblies should be inspected thoroughly as part of each 100 hour inspection and any discrepancies corrected.
 - B. Any carburetor air intake housing assembly having an exposed portion of the Teflon bearing which measures .250 - .282 (as shown in Figure 1 B) must be inspected in accordance with this bulletin, with repetitive inspections at 25 hour intervals until the assembly is replaced.
3. Remove the air filter so that the air valve and the welds that attach the air valve to the shaft can be inspected.
4. Inspect the entire carburetor air intake housing assembly for cracks. Using an inspection mirror and light, thoroughly inspect the welds that attach the air valve to the shaft and the areas of the air valve adjacent to the welds for cracks. See Figure 2.

REPLACE THE COMPLETE CARBURETOR AIR INTAKE HOUSING ASSEMBLY BEFORE FURTHER FLIGHT IF CRACKS ARE FOUND ANYWHERE IN THE ASSEMBLY.

5. Inspect the general condition of the entire carburetor air intake housing assembly. Inspect for wear on the bushings, shaft and lever. Verify that the air valve operates freely with no binding. **CORRECT ALL DISCREPANCIES BEFORE FURTHER FLIGHT.**
6. After the initial inspection has been performed, the repetitive 25 hours inspections can in most cases be performed without removal of the engine cowling.

REPLACEMENT INSTRUCTIONS

All affected carburetor air intake housing assemblies as identified under paragraph 2B above and P/N 641689 repair kit assemblies purchased between the dates of September 1, 1991 and June 30, 1993 must be replaced. Such assemblies may continue in service until replacement assemblies are obtained provided (1) they contain no cracks or other discrepancies and, (2) they continue to be inspected at 25 hour intervals in accordance with this bulletin.

A replacement assembly must be ordered from TCM as soon as bulletin affectivity has been established. Orders will be filled as replacement assemblies become available.

Teledyne Continental Motors will replace all carburetor air intake housing assemblies and repair kits affected by this bulletin (see paragraph 2B) at no charge on an exchange basis and will allow one (1) hour labor for removal and installation. Claims may be filed through any TCM distributor.

ISSUED			REVISED			 TELEDYNE CONTINENTAL MOTORS P.O. Box 90 • MOBILE ALABAMA 36601 (205)-438-3411	PAGE NO	REVISION
MO	DAY	YEAR	MO	DAY	YEAR		2 of 3	NONE
08	12	93						

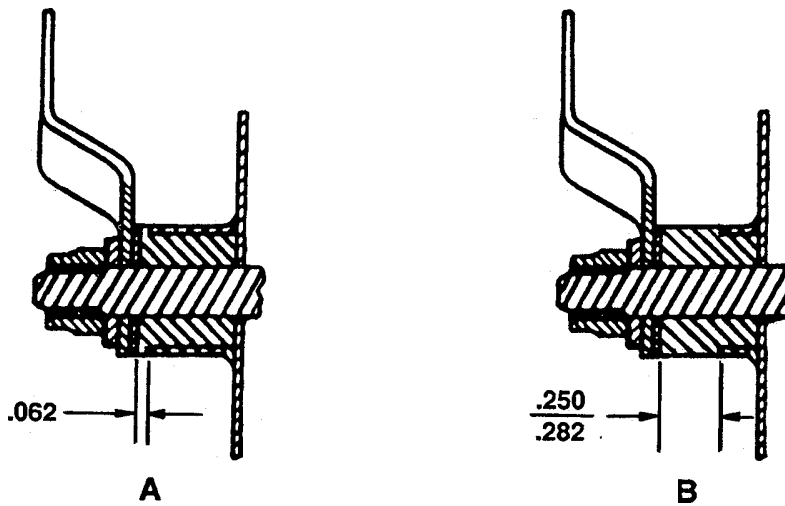


FIGURE 1
DETAIL OF BEARING AND HOUSING

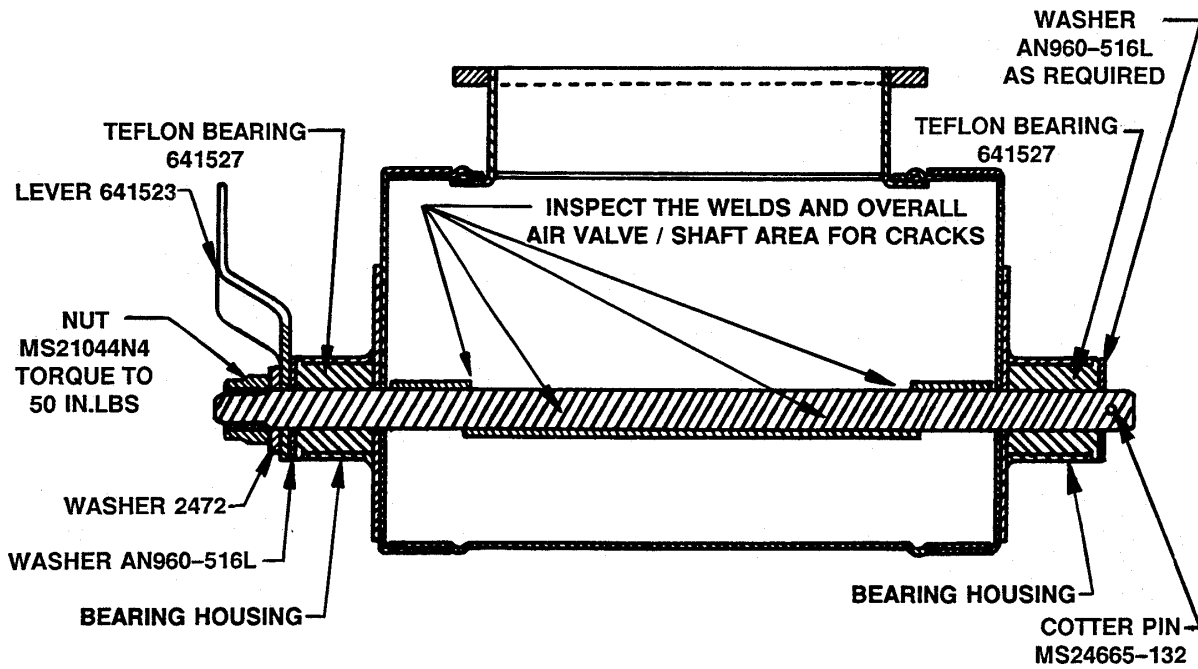



FIGURE 2
CROSS-SECTION OF AIRBOX

ISSUED			REVISED			 TELEDYNE CONTINENTAL MOTORS P.O. Box 90 • MOBILE ALABAMA 36601 (205)-438-3411	PAGE NO	REVISION
MO	DAY	YEAR	MO	DAY	YEAR		3 of 3	NONE
08	12	93						